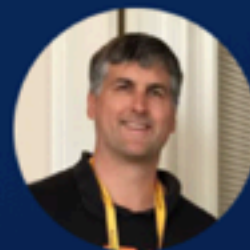


▲ ATlassian
SUMMIT 2018

Customizing draw.io

Diagramming in Confluence just got faster



DAVID BENSON | CO-FOUNDER | DRAW.IO | @DRAWIO

Why customize draw.io?

Save time & effort

Do you want to create diagrams quicker and easier with shapes and styles you commonly use?

Easier for your team

Do your team members constantly set specific fonts or add colors to the palette each time?

Corporate style

Do your diagrams need to match your corporate style?

What can be **customized**?

Templates, color palettes, fonts, shapes & connectors, ...

Custom Templates




Custom Templates

Navigation: Spaces, People, Microblog, Events, Create, Search


Dashboard / Learn draw.io **DRAFT**

draw.io

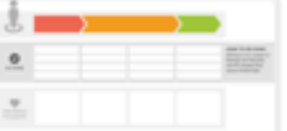
- draw.io diagram
- Search
- Custom Templates
- Jobs to be done**
- Video diagrams
- draw.io Templates
- Business
- Charts
- Engineering
- Flowcharts
- Mindmaps
- Mockups
- Network Diagrams
- Other
- Software Design
- Venn diagrams




Force-Diagram




Value-Proposition-Canvas




Customer-Journey-Map



Job-Map



Mental-Model



Mock-Up

Select Cancel

Changes saved Publish

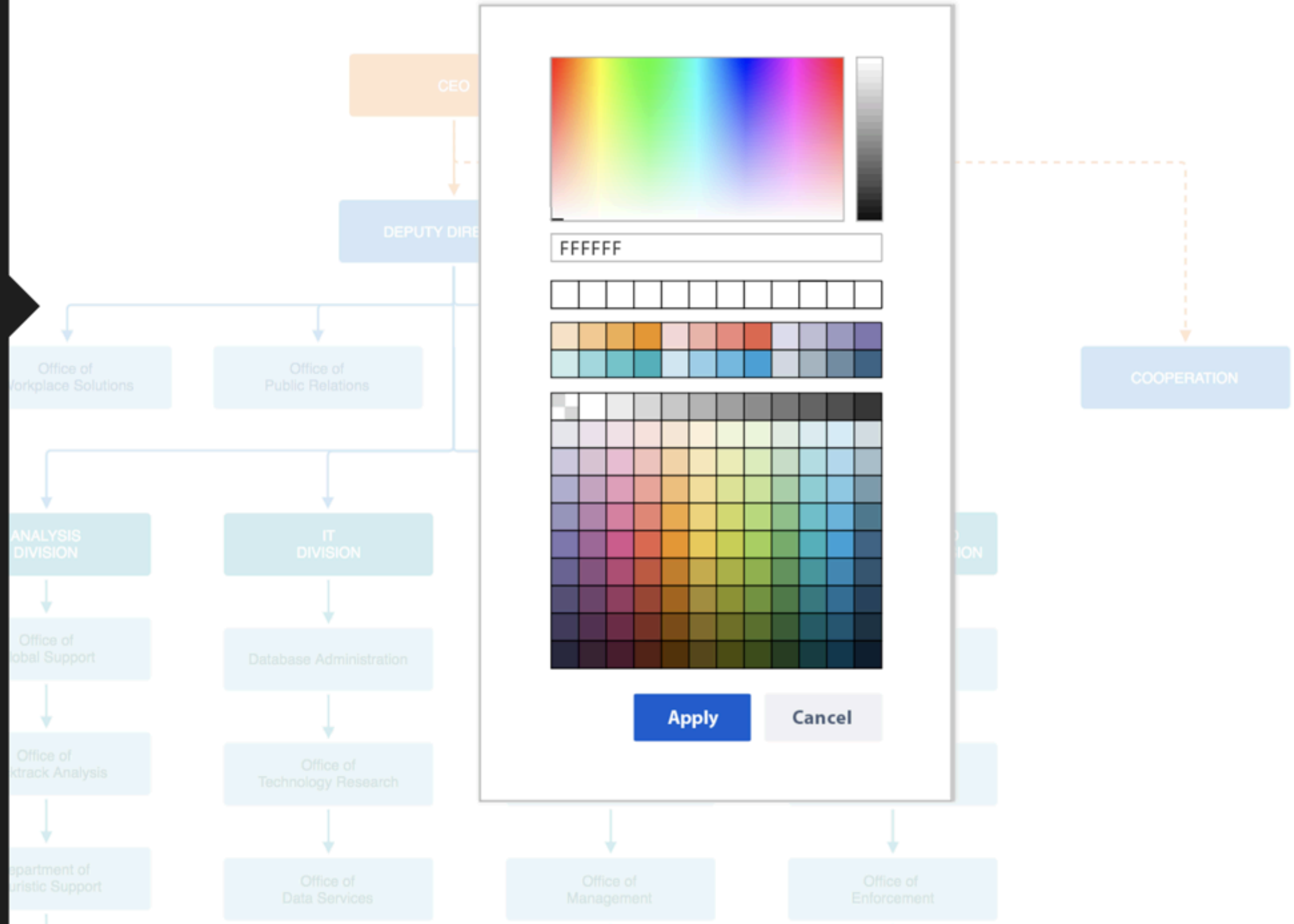
Custom Colors



Custom Colors

Color Palette

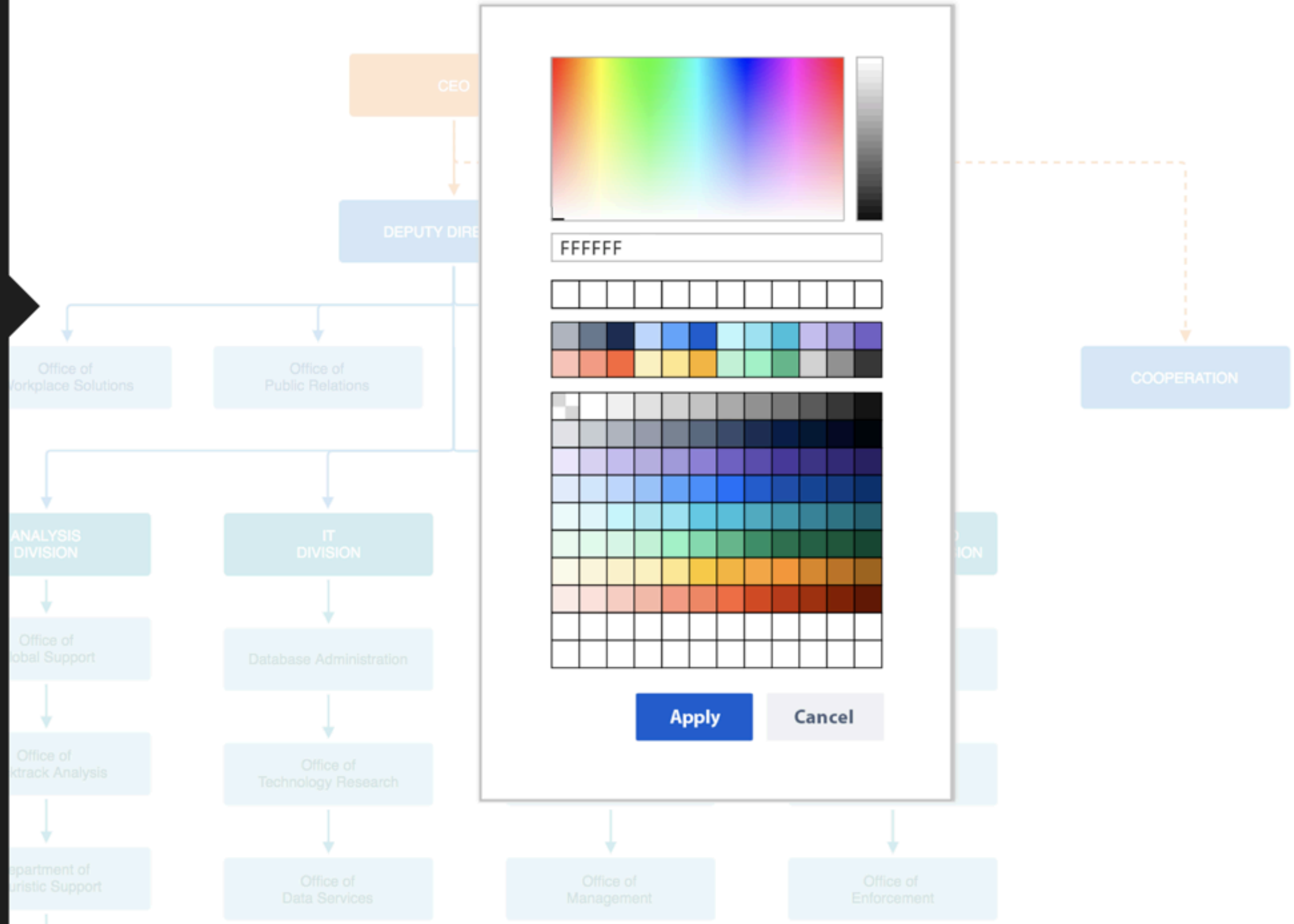
Color Panel



Custom Colors

Color Palette

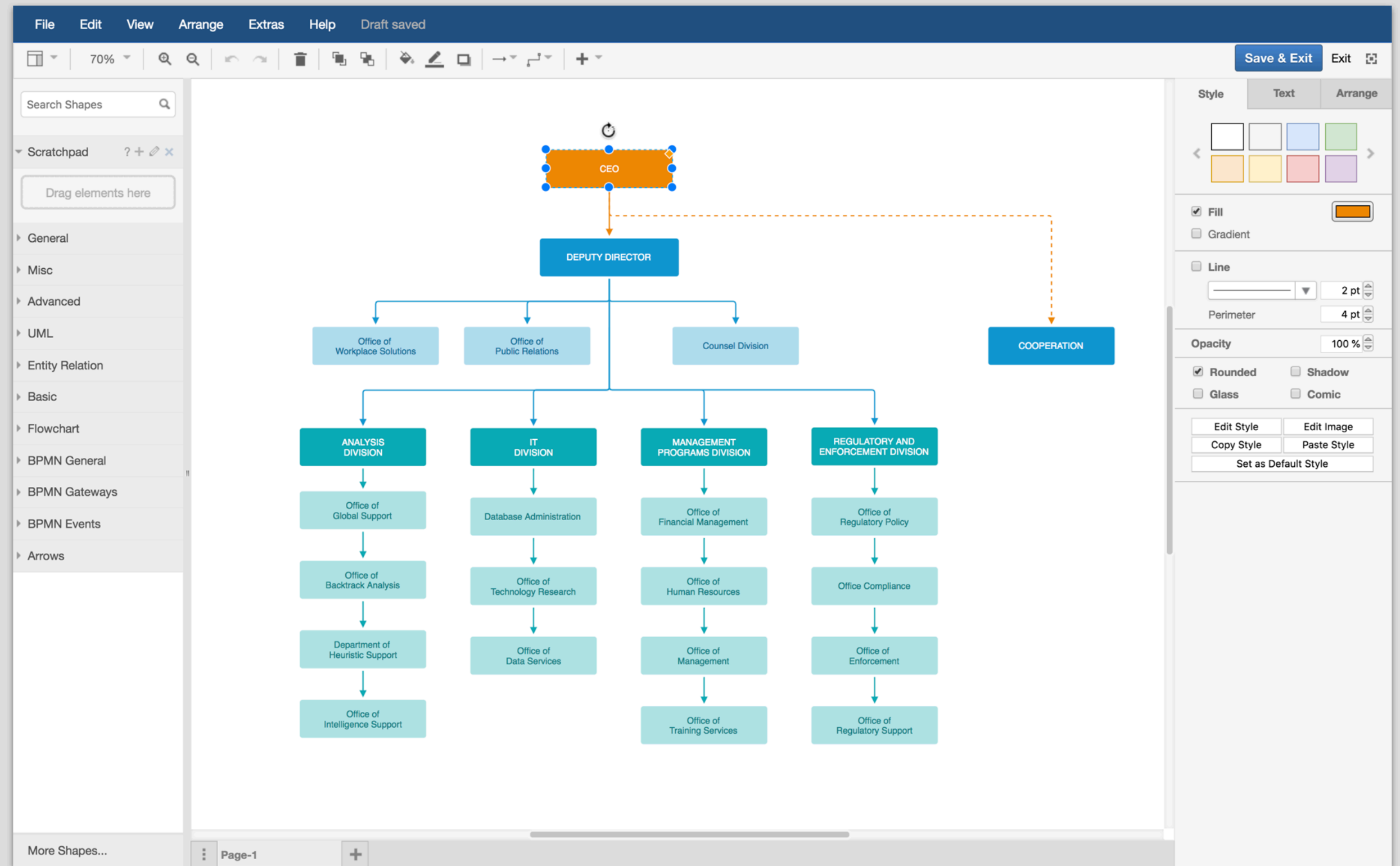
Color Panel



Custom Colors

Color Palette

Color Panel



Custom Colors

Color Palette

Color Panel

The image shows a design tool interface with a blue header bar. In the top right corner, there are buttons for "Save & Exit", "Exit", and a refresh icon. Below the header, there are three tabs: "Style", "Text", and "Arrange". The "Style" tab is active, displaying a color palette with eight color swatches: black, dark gray, blue, purple, orange, red, teal, and light blue. Below the palette, there are checkboxes for "Fill" (checked), "Gradient", and "Line". The "Fill" section shows a color selection box with an orange swatch. The "Line" section has a line style selector and two input fields for "2 pt" and "4 pt". The "Opacity" section shows a "100 %" input field. At the bottom, there are checkboxes for "Rounded" (checked) and "Shadow".

Save & Exit Exit

Style Text Arrange

< [Color Swatches] >

Fill Gradient

Line

2 pt

Perimeter 4 pt

Opacity 100 %

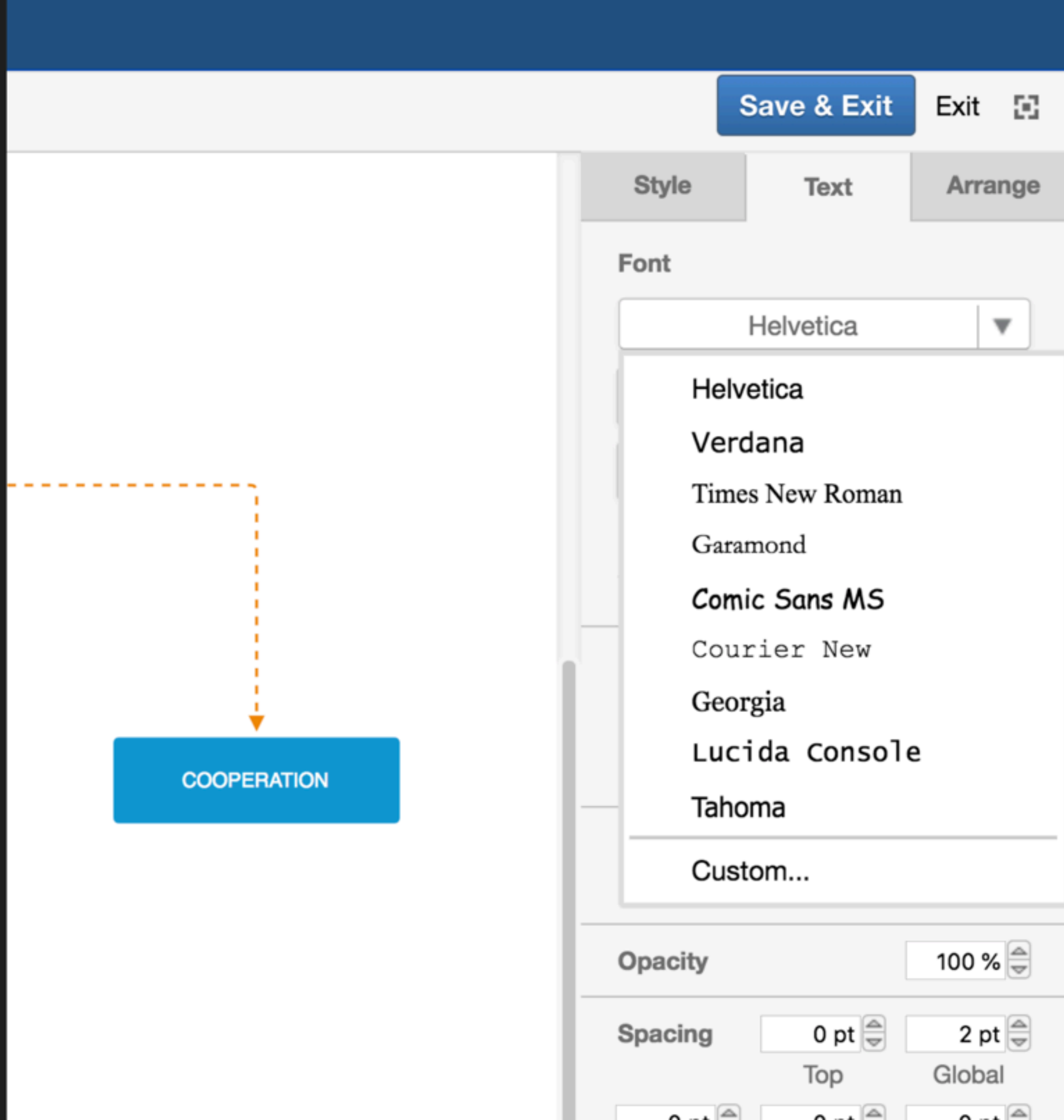
Rounded Shadow

COOPERATION

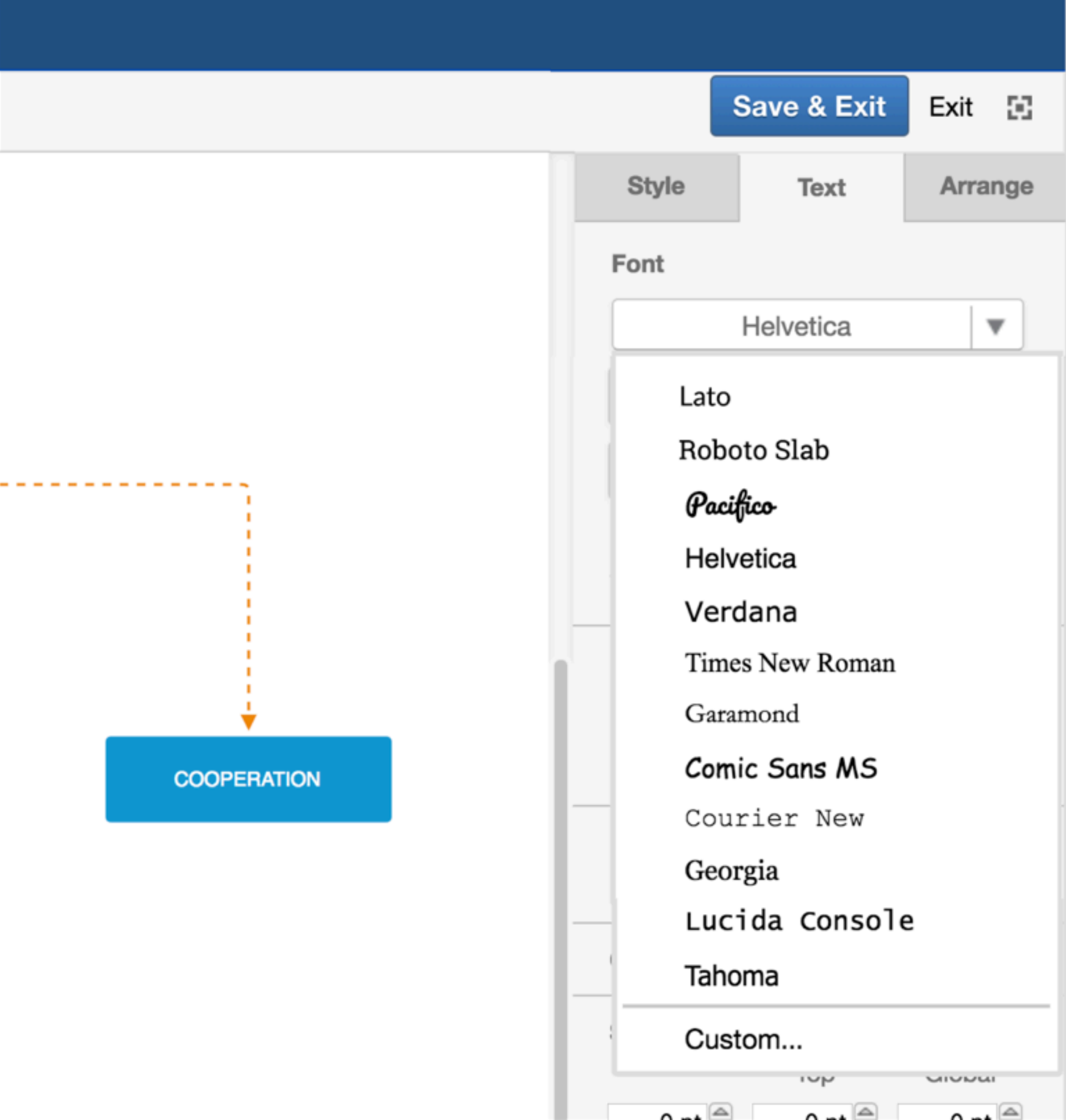
Custom Fonts



Custom Fonts



Custom Fonts

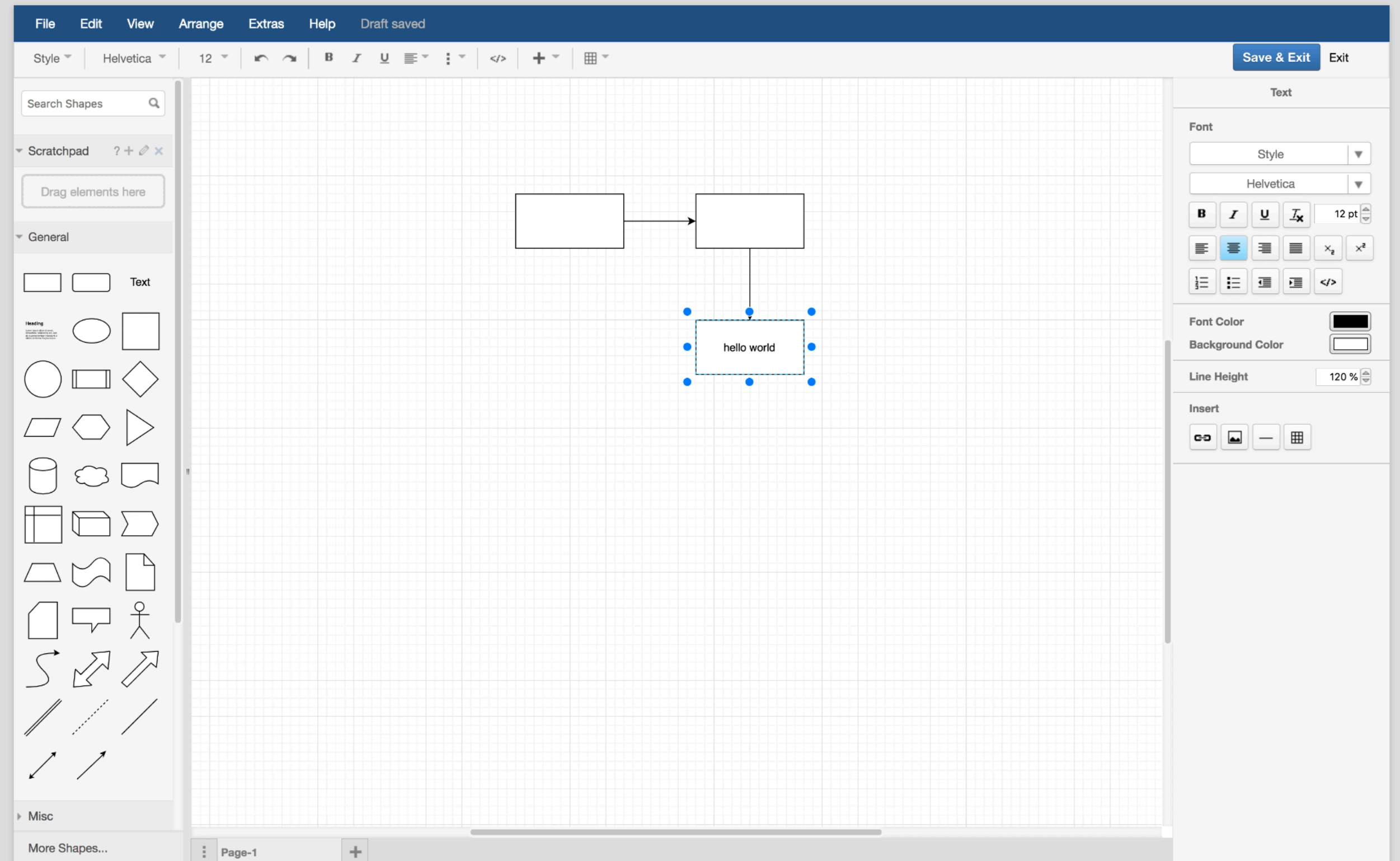


Element Styling

Element Styling

Original

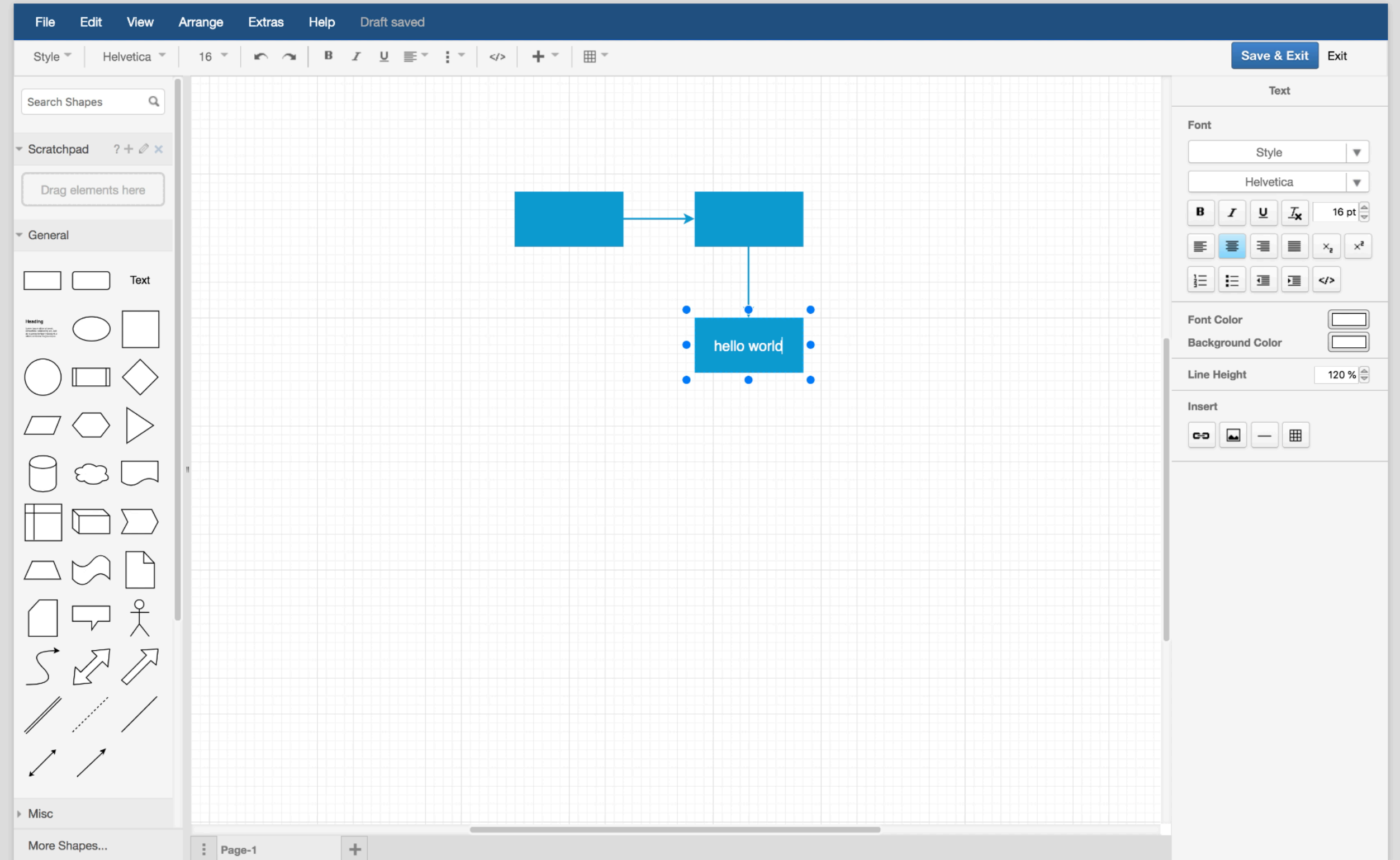
Customized



Element Styling

Original

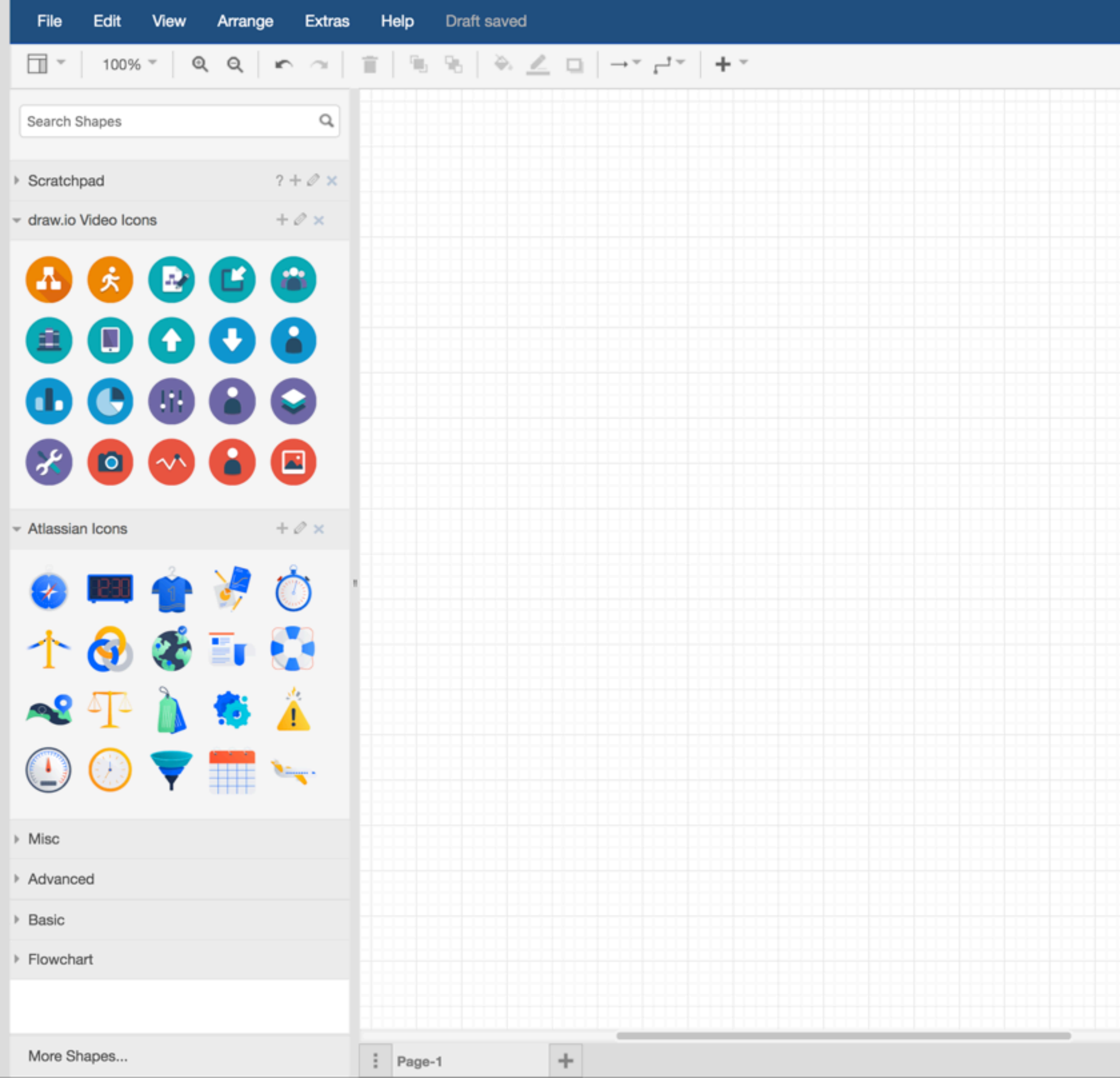
Customized



Custom Libraries



Custom Libraries



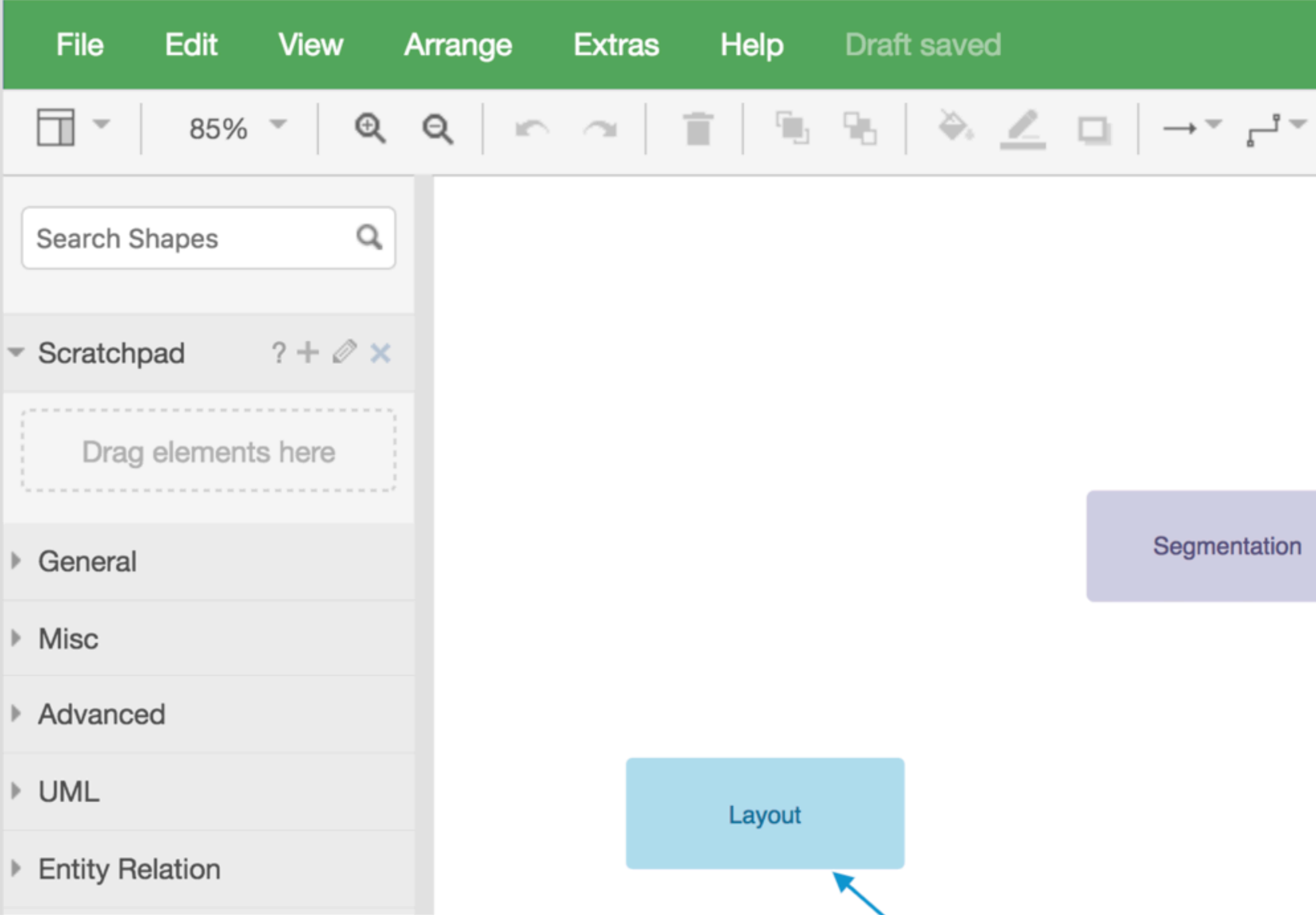
Custom CSS



Custom CSS

The image shows a software interface with a dark blue menu bar at the top containing the following items: File, Edit, View, Arrange, Extras, Help, and Draft saved. Below the menu bar is a toolbar with various icons for zooming (85%), undo, redo, delete, copy, paste, and other functions. On the left side, there is a sidebar with a search bar labeled 'Search Shapes' and a 'Scratchpad' section with a dashed box containing the text 'Drag elements here'. Below the scratchpad are several expandable categories: General, Misc, Advanced, UML, and Entity Relation. In the main workspace area, there is a light blue button labeled 'Layout' with a blue arrow pointing to it from the bottom right. To the right of the 'Layout' button, there is a light purple button labeled 'Segmentation'.

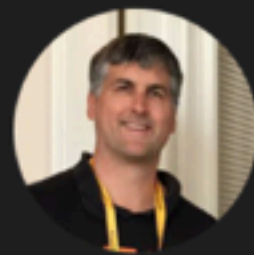
Custom CSS





Want to know more?

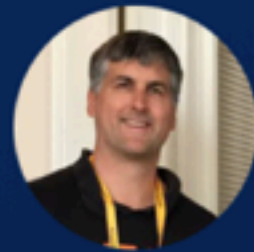
Feel free to ask!



DAVID BENSON | CO-FOUNDER | DRAW.IO | @DRAWIO

▲ ATlassian
SUMMIT 2018

Thank you!



DAVID BENSON | CO-FOUNDER | DRAW.IO | @DRAWIO